

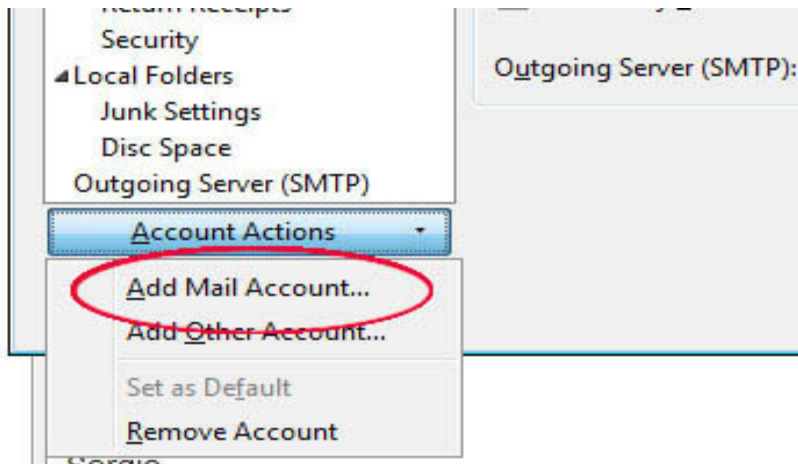
Create a new account on Thunderbird (IMAP)

Handcrafted Websites.co.uk

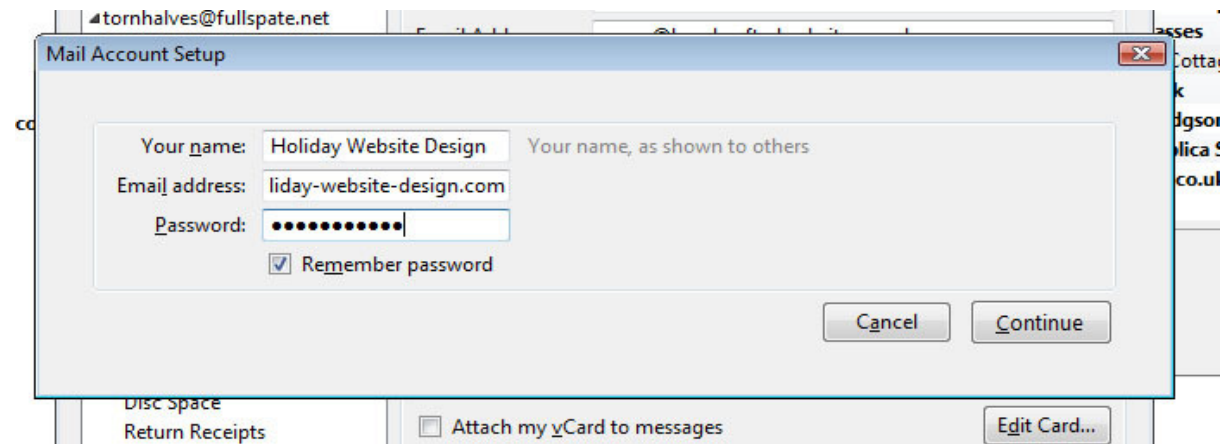
Open Thunderbird. In the menu at the top see the tab marked **Tools**. Click **Tools -> Account Settings**.

In the new Account Settings window find the tab bottom left marked **Account Actions**. Click the arrow to reveal the options.

Click **Add Mail Account**.

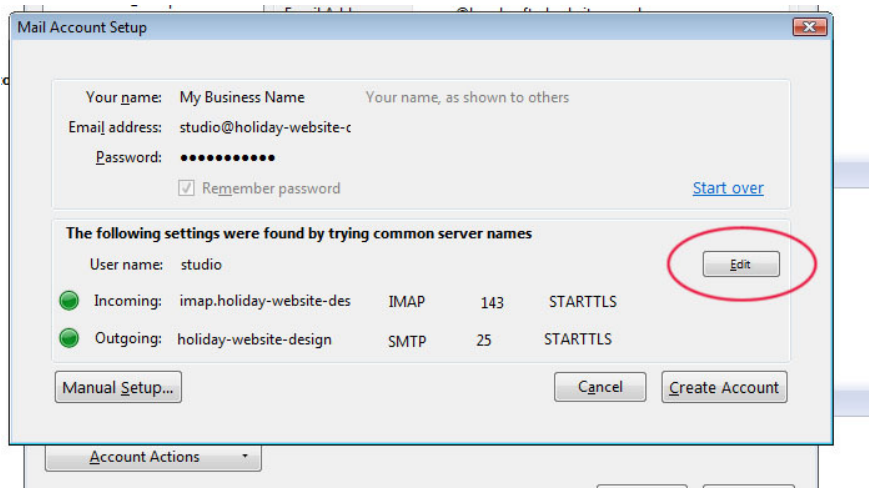


In the new window enter the name of your business as you want it to appear at the top of your future emails, then enter the email address and the password.



Click **Continue**.

Thunderbird will then try to guess what the right settings for your account are. Be patient while it does its best. The settings it suggests will probably be wrong, so click the option to **Edit** the settings.



You will then be able to enter the right settings for your email account.

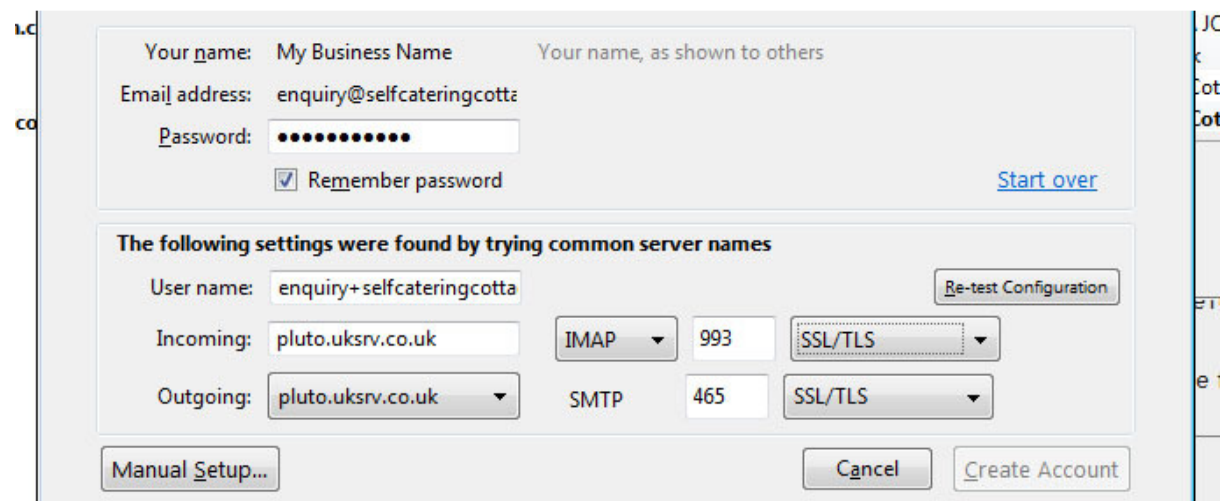
POP or IMAP?

Use the settings for a **POP** email account if you are going to access your emails mainly from one device (e.g. you are going to handle all business correspondence from a desktop PC or laptop).

Use the **IMAP** settings if you are going to use multiple devices and need to have your inbox, sent folders and other mail folders synchronised between devices.

1. IMAP account setup

For an IMAP account the settings should look like this:



Note:

Username is the email with a +

Incoming server:

pluto.uksrv.co.uk

IMAP

port 993

SSL/TLS

Outgoing server:
pluto.uksrv.co.uk
SMTP
port 465
SSL/TLS

Click **Retest Configuration**. Then click **Create Account**. The account is now ready to be tested and used.

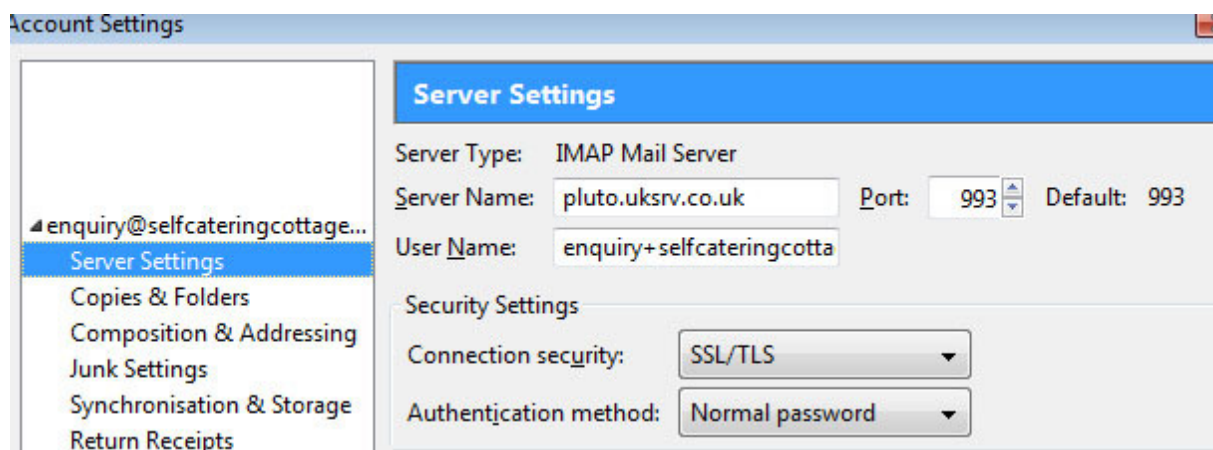
1. Manual setup

In some versions of Thunderbird the Edit button does not appear. Instead, after Thunderbird tries to guess the server settings itself (and gets them wrong) you have the option to alter them manually.



When you click **Manual Setup** you are taken back to the main Account Settings window. You should see your new email address on the left and a list below it. Click the first item in that list: **Server Settings**

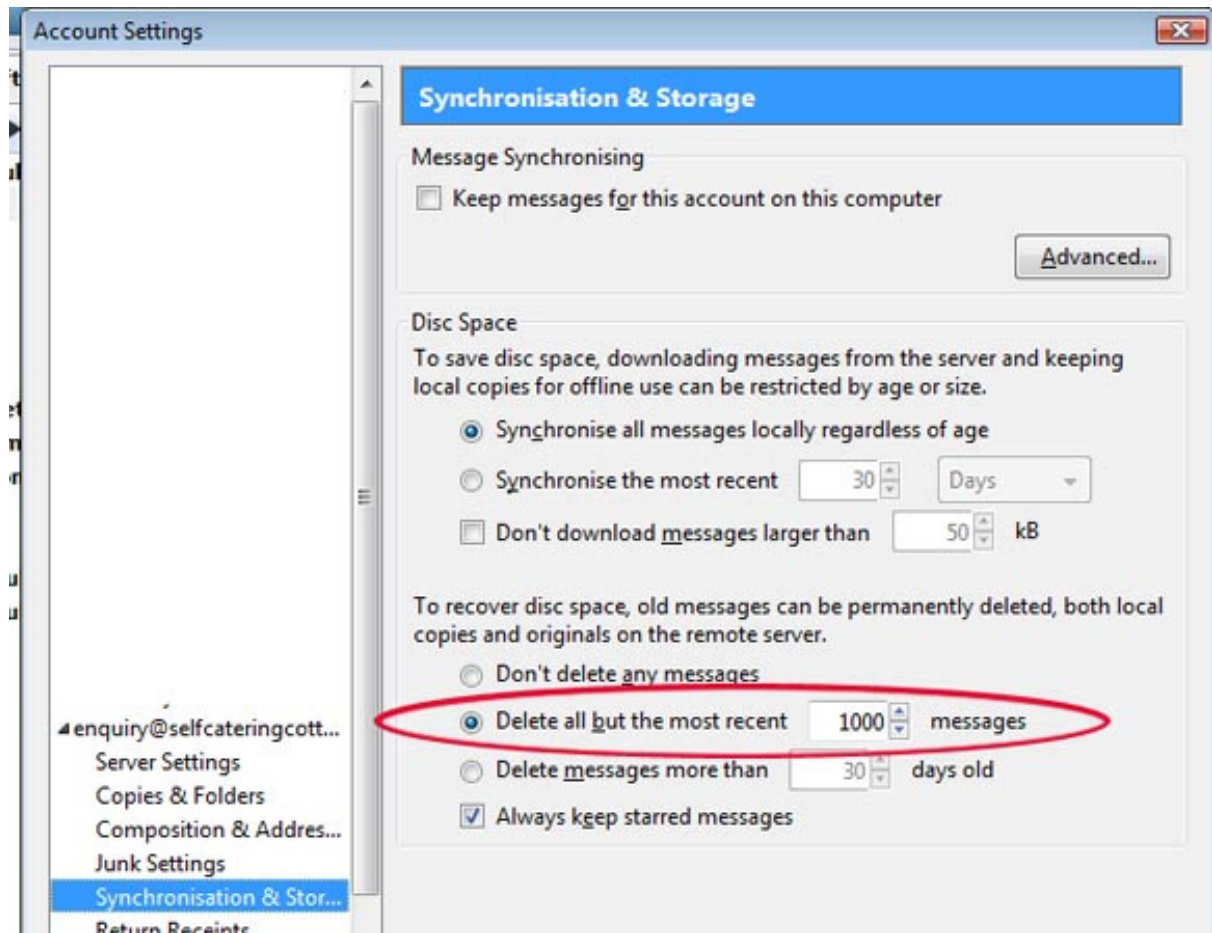
For an **IMAP** account the settings should look like this:



At the bottom of the main account settings window on the left it should say **Outgoing Server SMTP**. Click that to check the settings. Then click the **Edit** button to see the full details. They are the same for both IMAP and POP accounts. They should look like this:

Click **Synchronisation & Storage** in the list on the left.

Make sure you select one of the settings to automatically delete emails (either over a certain age or over a certain number).



Some emails you will want to keep indefinitely. To keep them first create one or more local folders to store them in (i.e. folders that will exist on your local device, not on the server – so do this on your most important device). To do that close the Account Settings window and return to the normal initial view of Thunderbird with the email account and its inbox and outbox on the left. There should be an item called Local Folders. Right-click it and select the option to create a New Folder. Give it an appropriate name. Then when an email comes in that you know will need to be saved, you can drag it into that folder.

Protect the emails in that new folder. Click Tools -> Account Settings again and find the Disc Space item underneath Local Folders on the left. Click it to see the options. Select the option Don't Delete Any Messages.

Alternatively, you can click the star icon next to emails in your inbox and then make sure that in the Synchronisation Settings panel the option NOT to delete starred messages is ticked.

If things don't seem to be working correctly

Remember that you have direct access to your mailbox through the Control Panel for your hosting account. If your mail system doesn't seem to be working properly and you think the mailbox might be full or might have emails that are not being downloaded, see the mailbox by logging into your control panel, then click the Email Accounts icon, then click the small arrow to the right of the email address, select "Access Webmail", select the Horde email client, reenter your email address password and look at your inbox.

Remember to log out when you finish with your control panel.